



Laboratoire de Pharmacognosie



Université Lille 2
Droit et Santé

Mélanges de plantes : exercices

Thierry HENNEBELLE

Mai 2008

Questions et suggestions :
thierry.hennebelle@univ-lille2.fr

Avertissement

Ce document, dans sa forme actuelle n'est qu'un exercice de reconnaissance de plantes sèches en mélanges. La composition desdits mélanges n'est aucunement validée par les auteurs.

Comment utiliser ?

Les exercices se présentent comme suit :

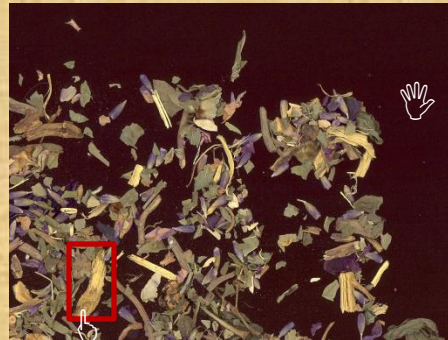


Dans l'image générale, on peut zoomer sur certaines images (👉 devient 👆)

Selon les cas, on observera :



Soit directement l'image d'une partie caractéristique de plante



Soit un zoom sur une partie de l'image, dans lequel on peut d' nouveau zoomer (👉 devient 👆)



VUE GENERALE

: ramène à la vue générale d'un mélange

RETOUR

: ramène à la vue précédente

SOLUTION

: donne la composition du mélange

CHOIX TISANES

: permet de choisir un autre exercice

Choix de l'exercice

Tisane n 1

Tisane n 6

Tisane n 2

Tisane n 7

Tisane n 3

Tisane n 8

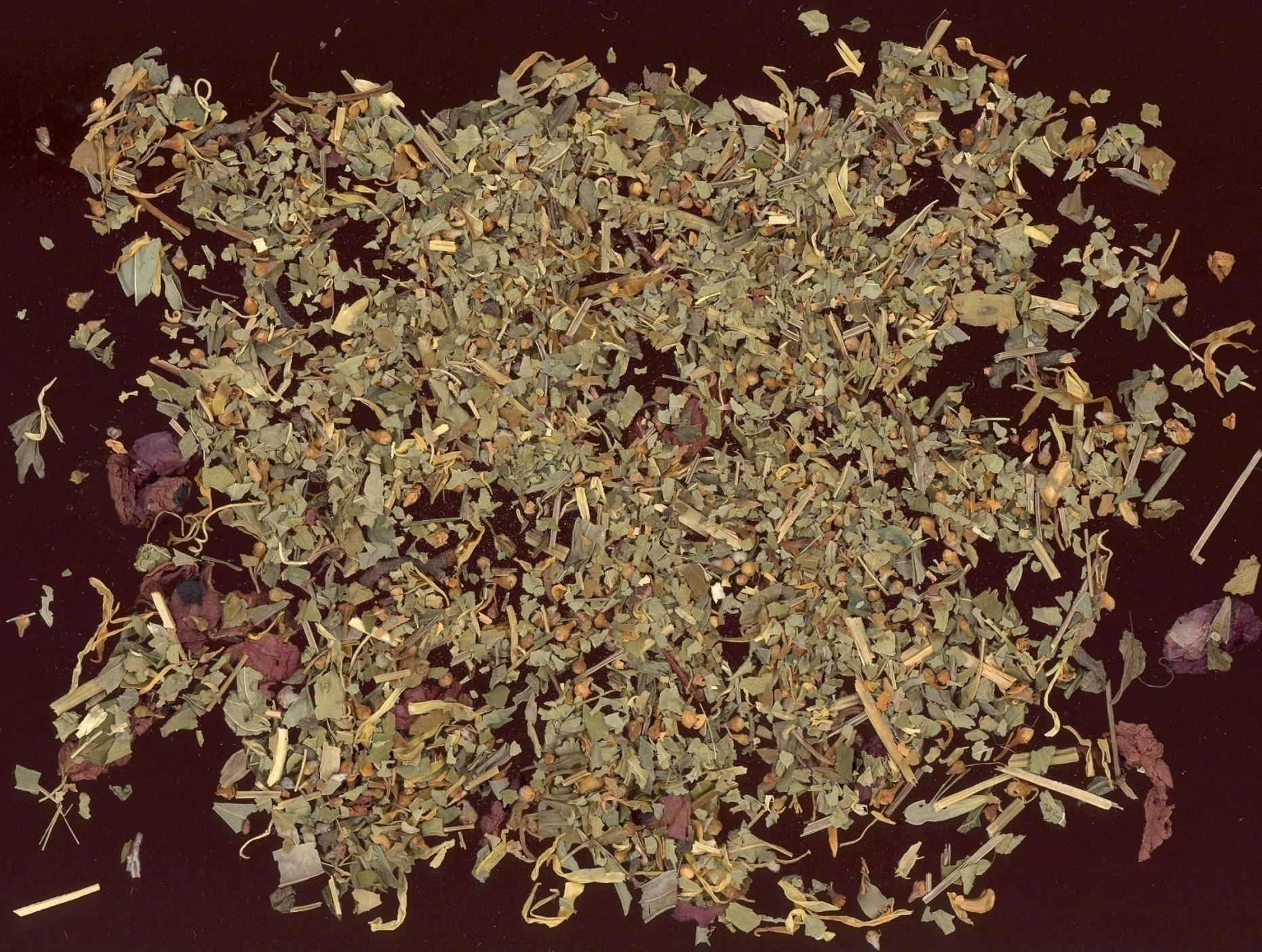
Tisane n 4

Tisane n 9

Tisane n 5

Tisane n°1

5 plantes



VUE GENERALE



VUE GENERALE





VUE GENERALE



VUE GENERALE



RETOUR



RETOUR

SOLUTION

VUE GENERALE



RETOUR

SOLUTION

VUE GENERALE



SOLUTION

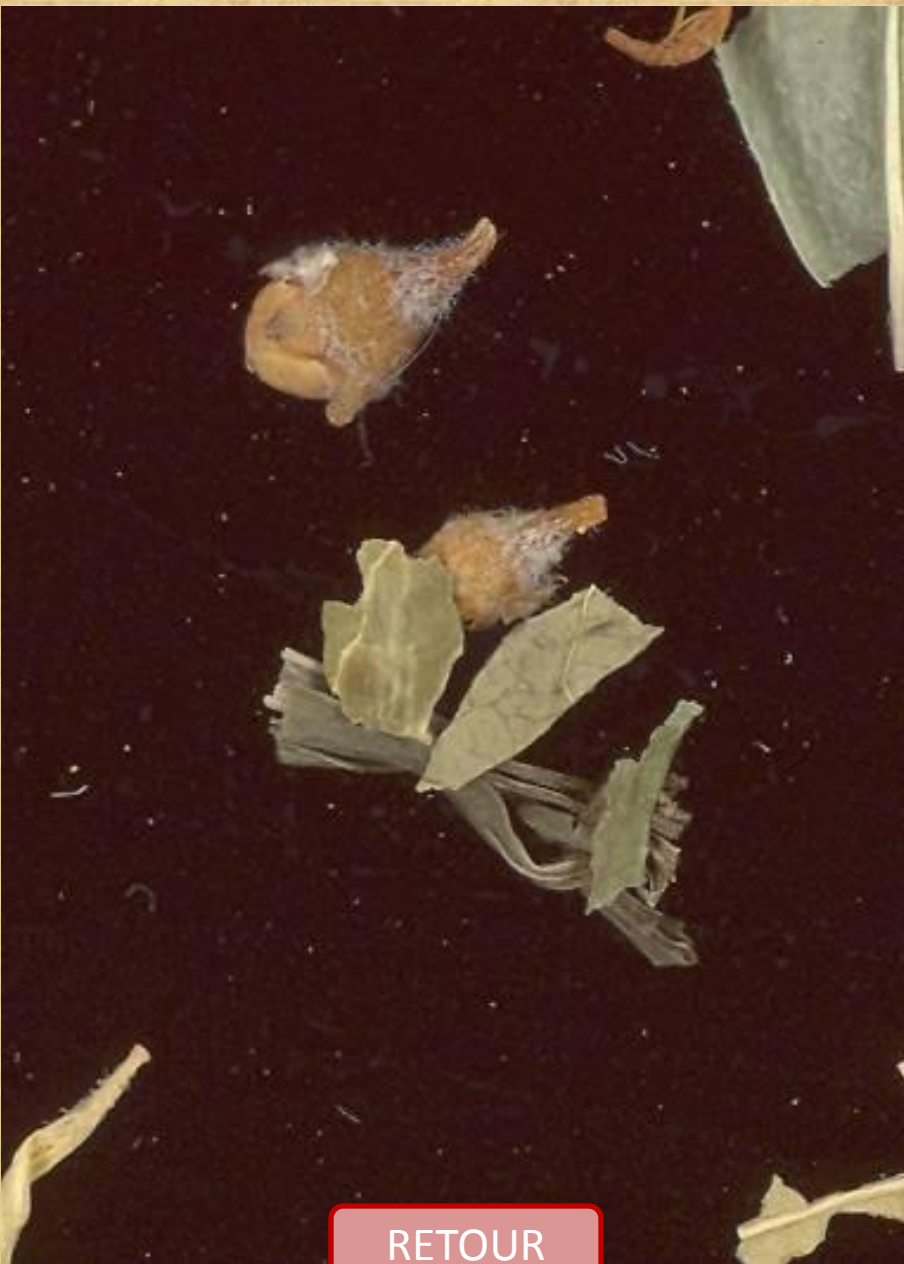
RETOUR

VUE GENERALE



RETOUR

SOLUTION



RETOUR

VUE GENERALE



RETOUR



RETOUR

SOLUTION

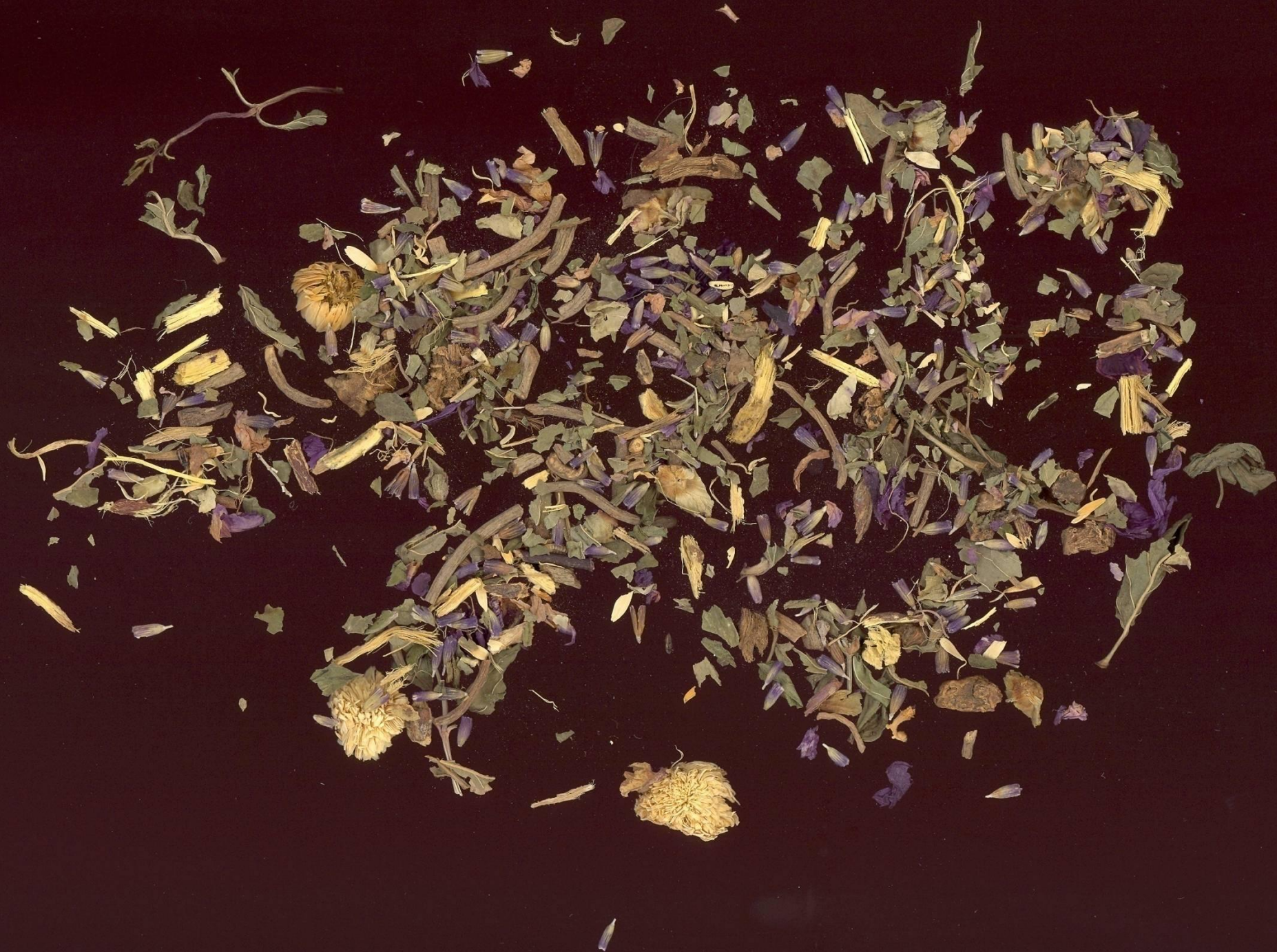
VUE GENERALE

SOLUTION tisane n°1

- [Aspérule odorante](#)
- [Coquelicot](#)
- [Souci](#)
- [Aubépine](#) (sommités fleuries)
- [Passiflore](#)

Tisane n°2

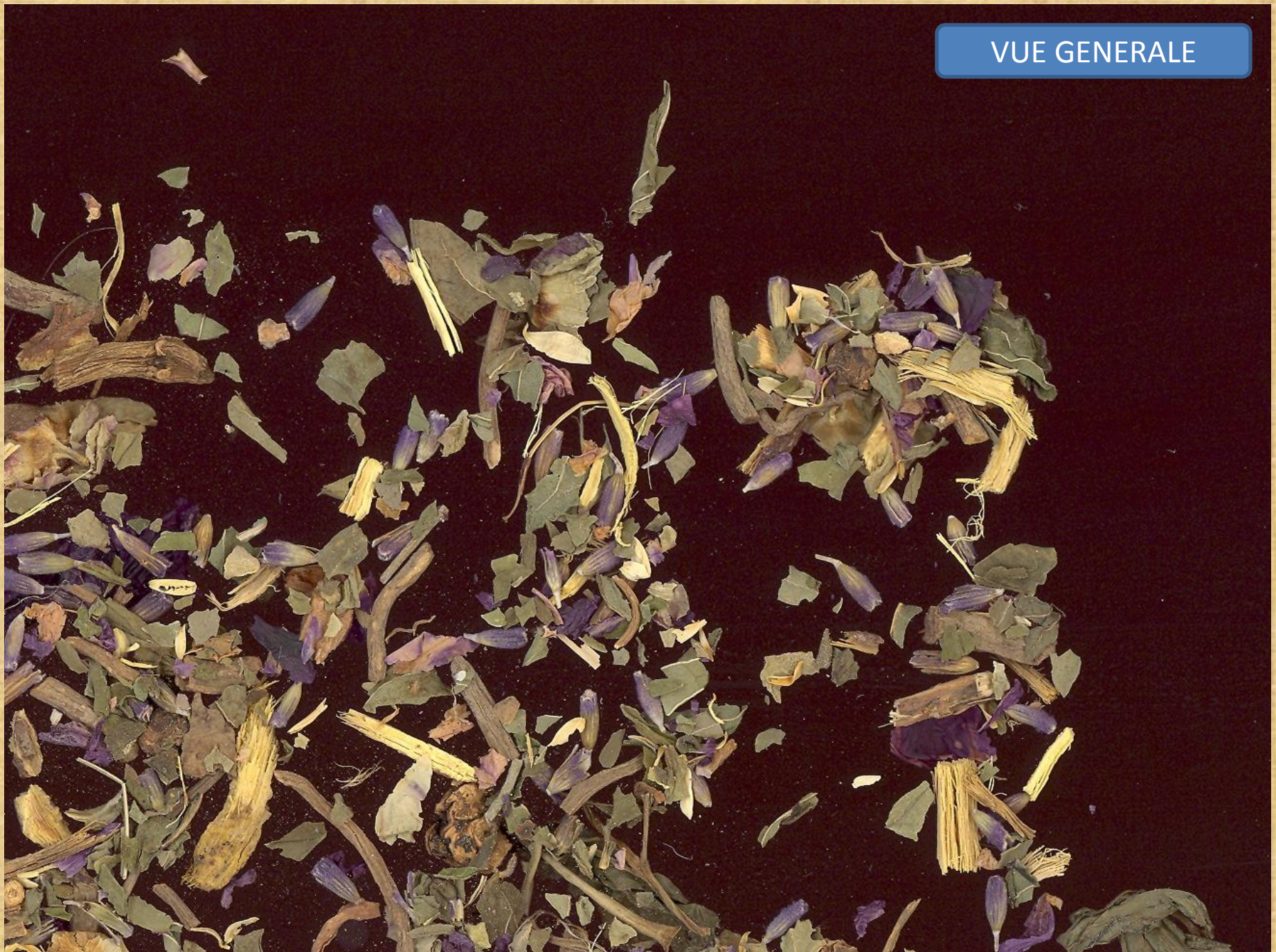
6 plantes

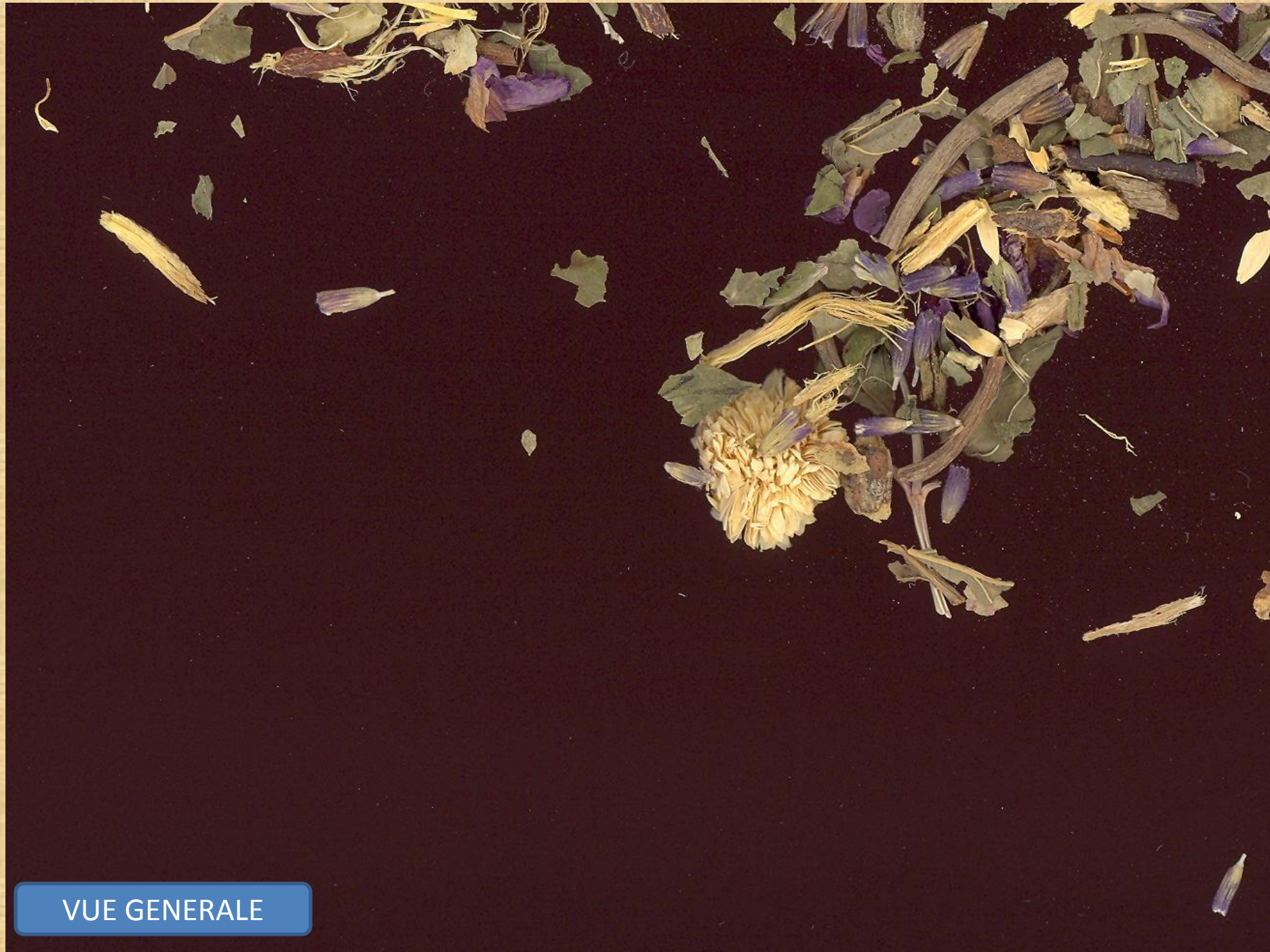


VUE GENERALE

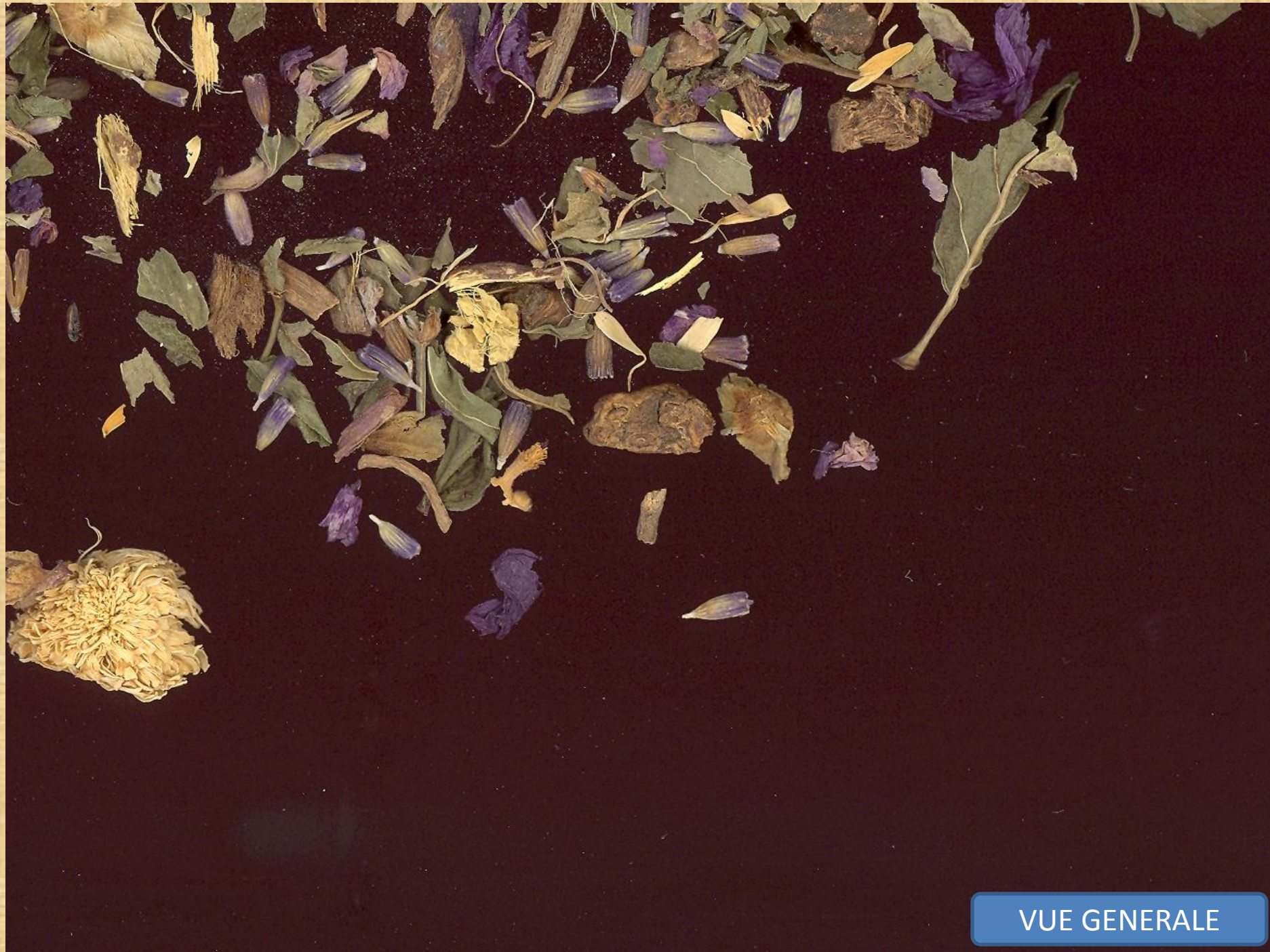


VUE GENERALE





VUE GENERALE



VUE GENERALE



RETOUR



RETOUR

SOLUTION

VUE GENERALE



RETOUR



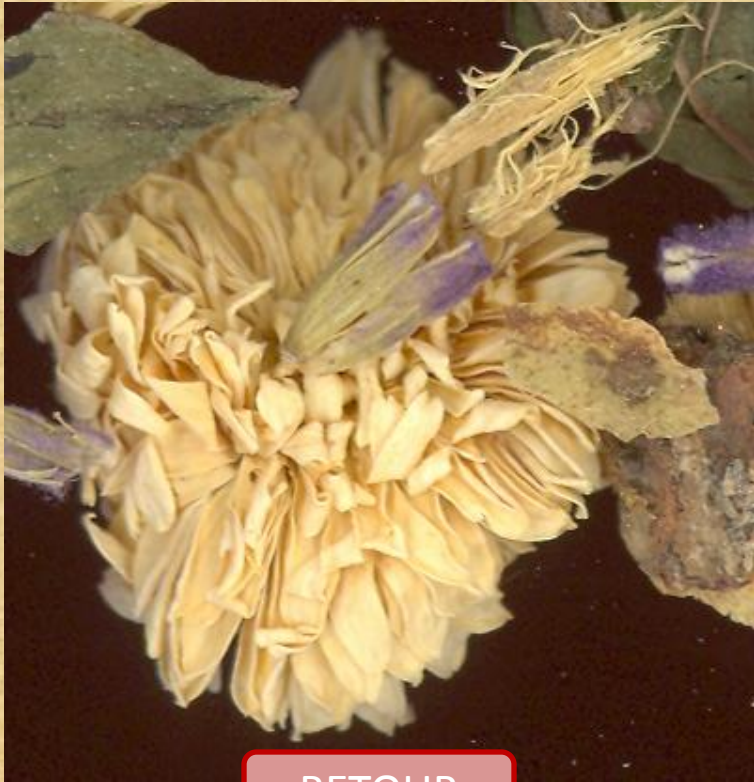
RETOUR



RETOUR

SOLUTION

VUE GENERALE



RETOUR

RETOUR



SOLUTION

VUE GENERALE

RETOUR



RETOUR



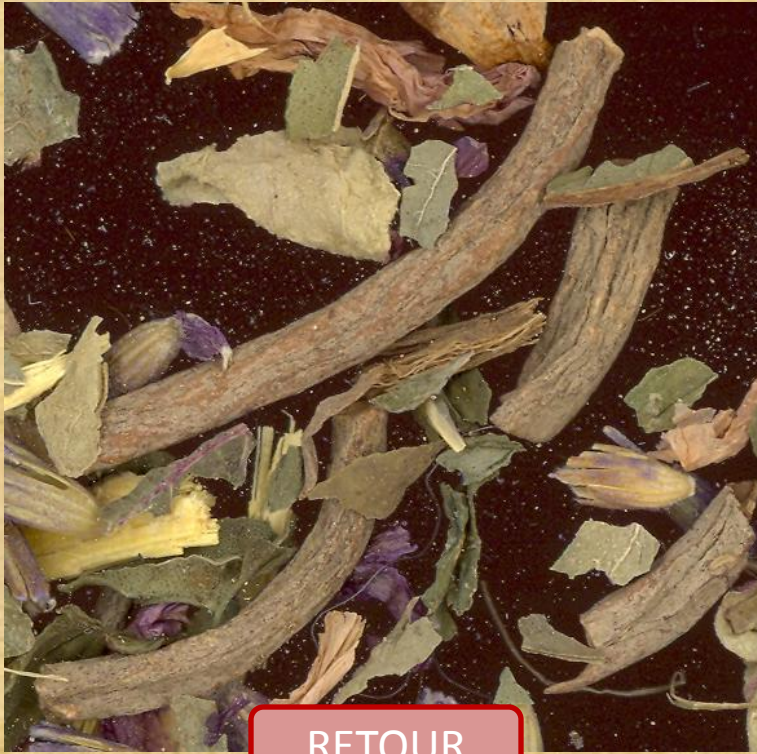
RETOUR

SOLUTION



RETOUR

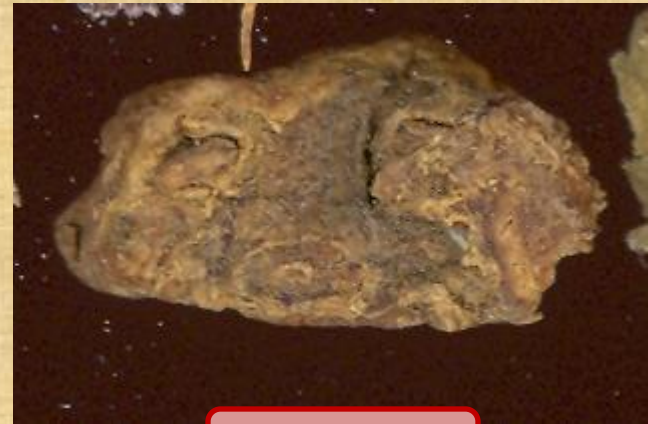
VUE GENERALE



RETOUR



RETOUR



RETOUR



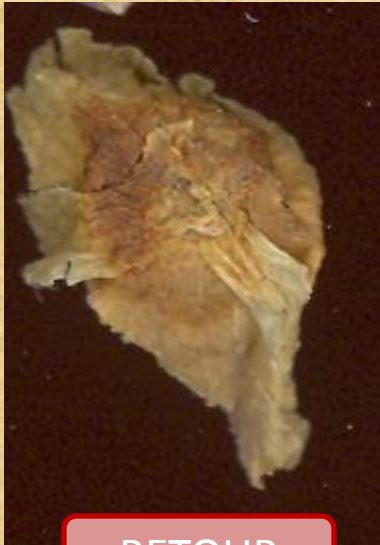
RETOUR

SOLUTION

VUE GENERALE



RETOUR



RETOUR



RETOUR

SOLUTION



RETOUR

VUE GENERALE

SOLUTION tisane n°2

- [Menthe poivrée](#)
- [Réglisse](#)
- [Camomille romaine](#)
- [Lavande](#)
- [Valériane](#)
- [Mauve](#)

Tisane n°3

6 plantes



VUE GENERALE



VUE GENERALE





VUE GENERALE



VUE GENERALE



*

RETOUR



RETOUR



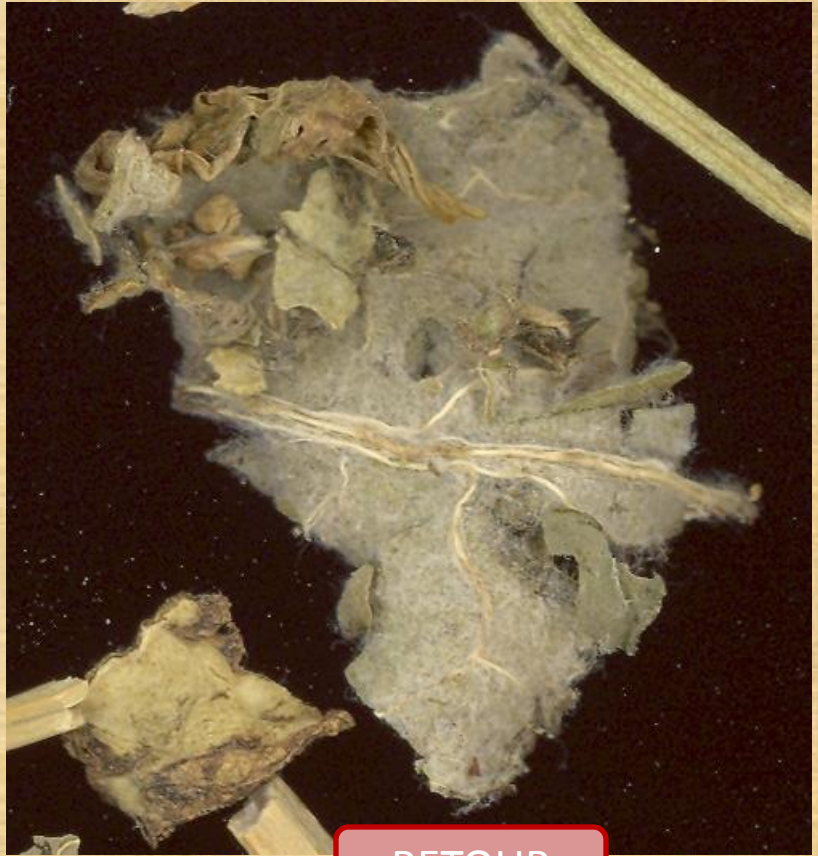
RETOUR

SOLUTION

VUE GENERALE



RETOUR



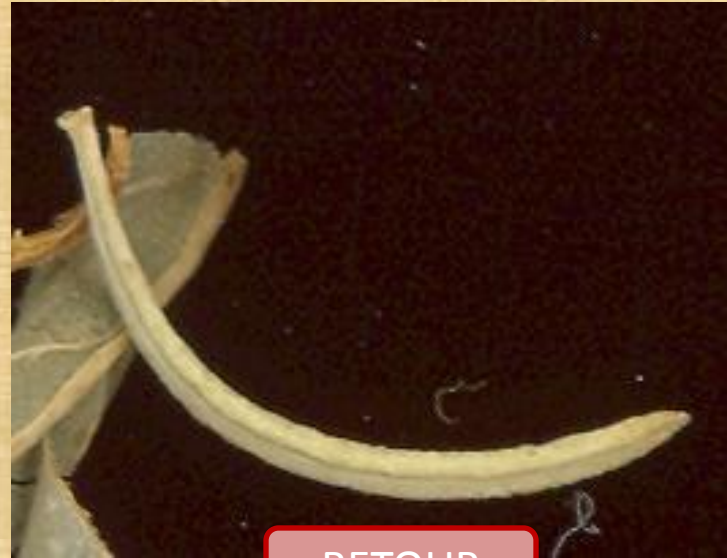
RETOUR

SOLUTION

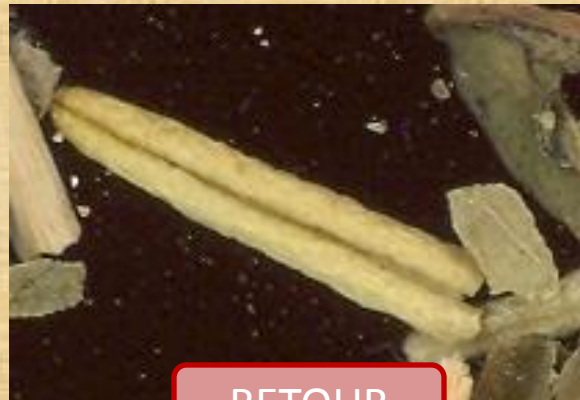
VUE GENERALE



RETOUR



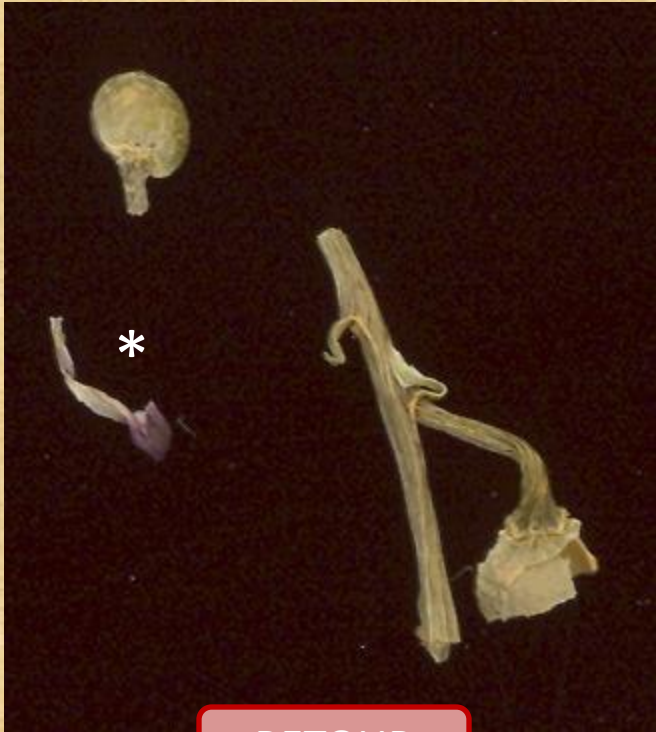
RETOUR



RETOUR

SOLUTION

VUE GENERALE



RETOUR



RETOUR



RETOUR

SOLUTION

VUE GENERALE



RETOUR



RETOUR

SOLUTION

VUE GENERALE



RETOUR



RETOUR

SOLUTION

VUE GENERALE

SOLUTION tisane n°3

- [Menthe poivrée](#) (*tétrakène : rare)
- [Artichaut](#)
- [Romarin](#)
- [Fumeterre](#) (*fleur : rare)
- [Souci](#)
- [Boldo](#)

Tisane n°4

5 plantes



VUE GENERALE

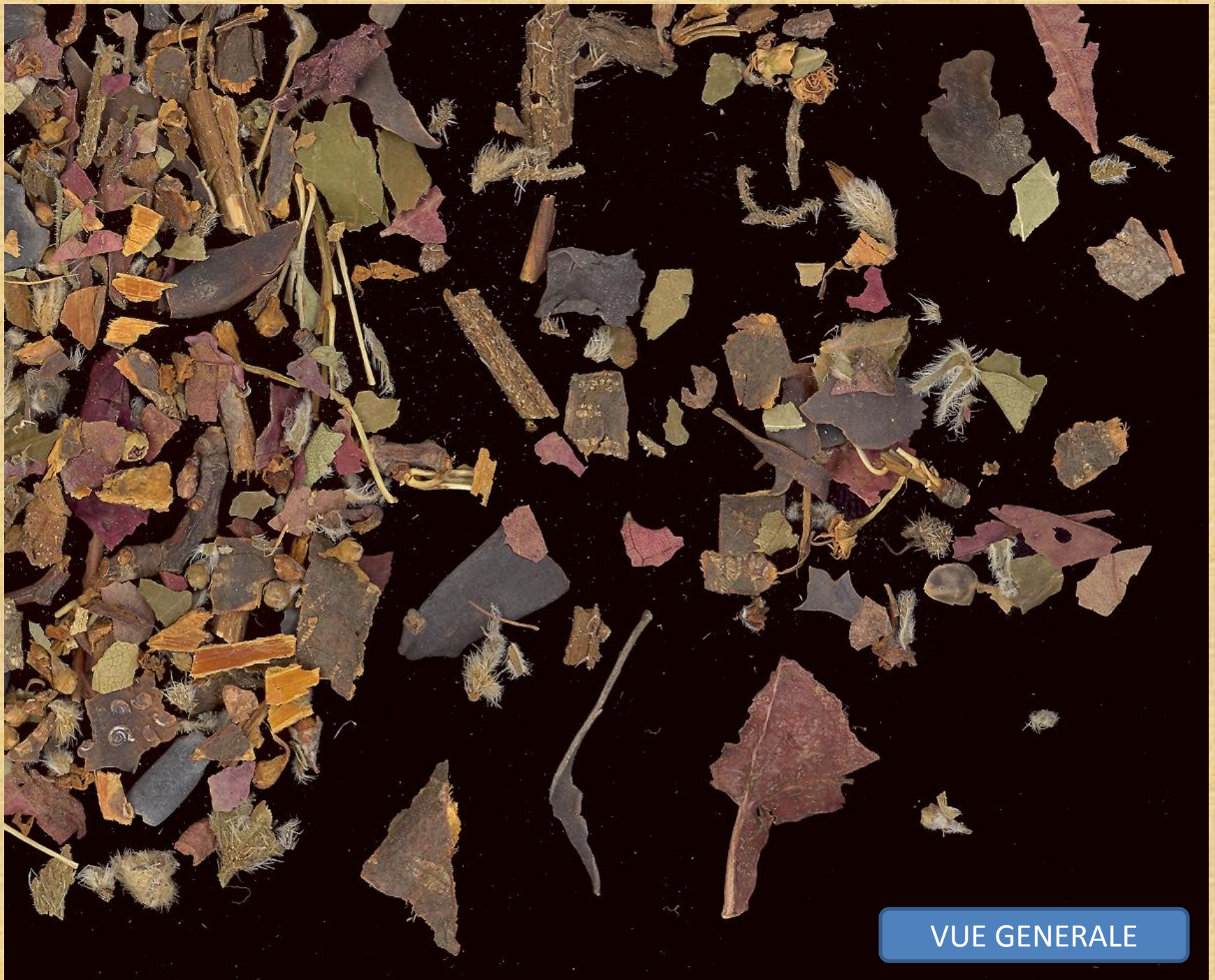


VUE GENERALE

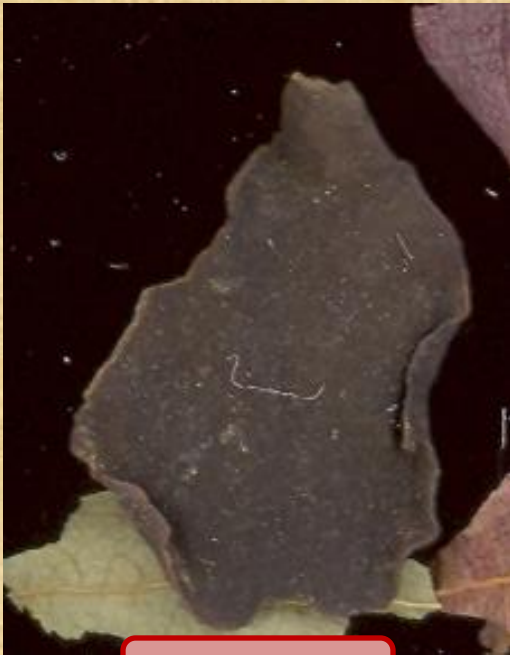




VUE GENERALE



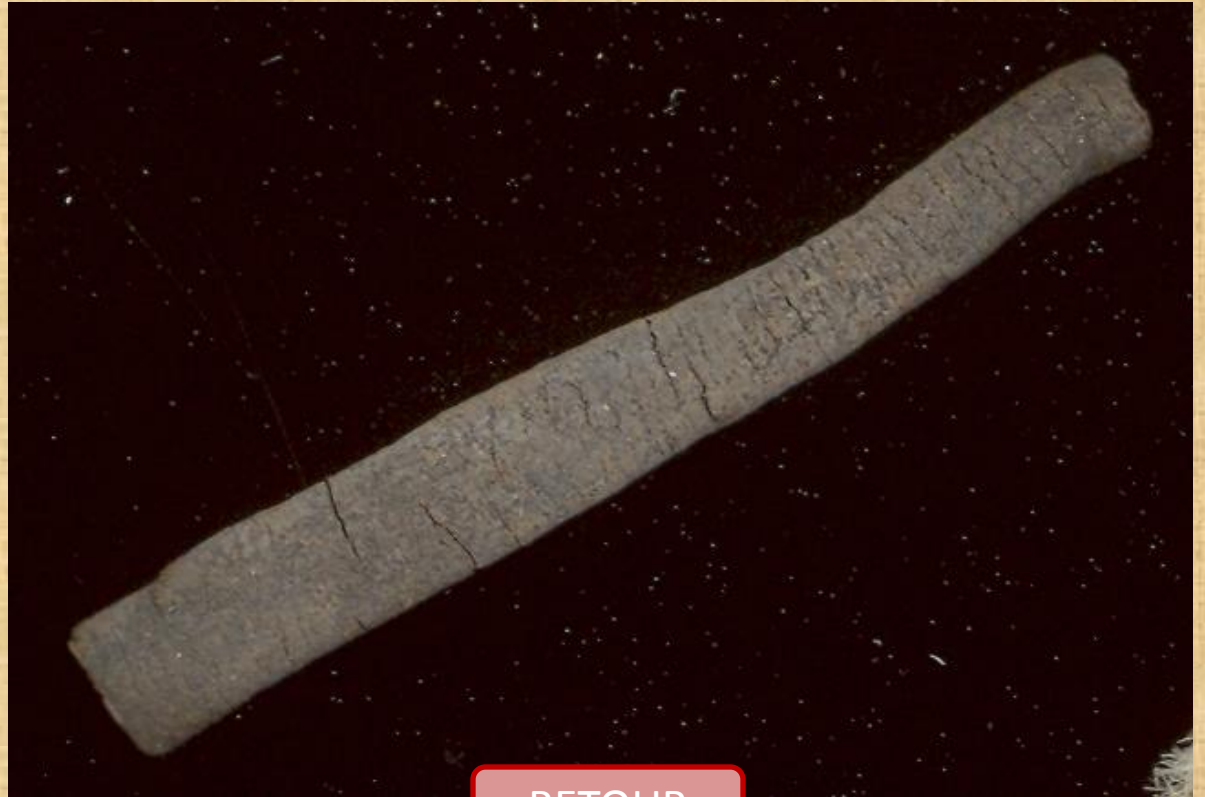
VUE GENERALE



RETOUR



RETOUR



RETOUR

SOLUTION

VUE GENERALE



RETOUR



RETOUR



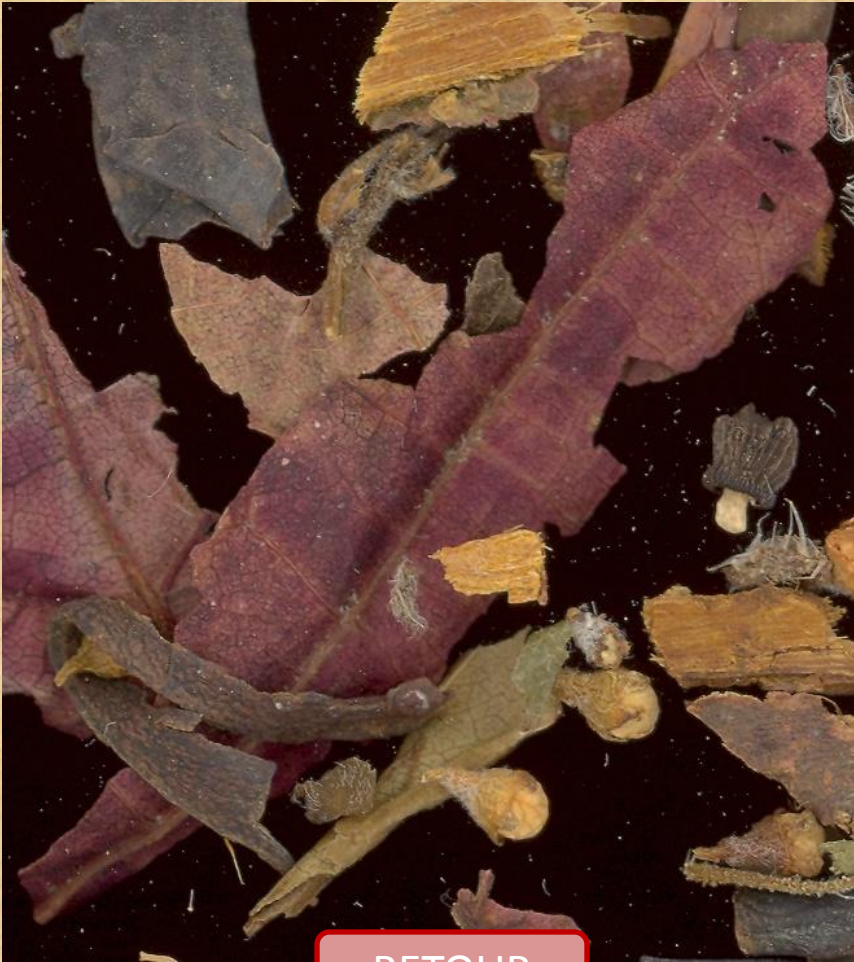
RETOUR



RETOUR

SOLUTION

VUE GENERALE



RETOUR



RETOUR



RETOUR

SOLUTION

VUE GENERALE



RETOUR



RETOUR



RETOUR



RETOUR



RETOUR

SOLUTION

VUE GENERALE



RETOUR



RETOUR



RETOUR

SOLUTION

VUE GENERALE

SOLUTION tisane n°4

- [Fucus](#)
- [Bourdaïne](#)
- [Vigne rouge](#)
- [Bourrache](#)
- [Aubépine](#) (sommités fleuries)

Tisane n°5

5 plantes





SOLUTION

VUE GENERALE



SOLUTION

VUE GENERALE



SOLUTION

VUE GENERALE



SOLUTION

VUE GENERALE



SOLUTION

VUE GENERALE

SOLUTION tisane n°5

- Rose rouge
- Camomille romaine
- Matricaire
- Bleuet
- Mauve

Tisane n°6

6 plantes





SOLUTION

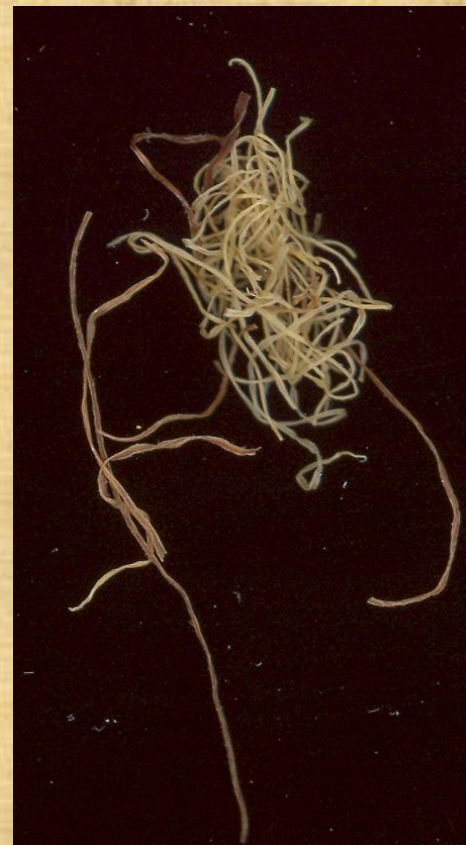
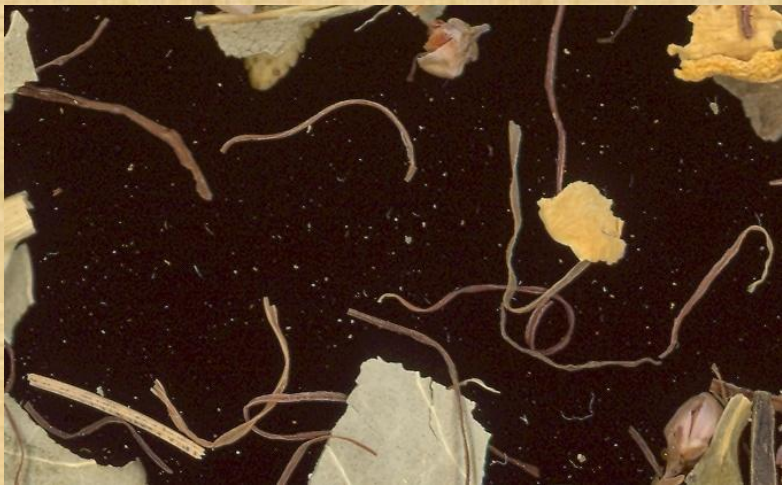


VUE GENERALE



SOLUTION

VUE GENERALE



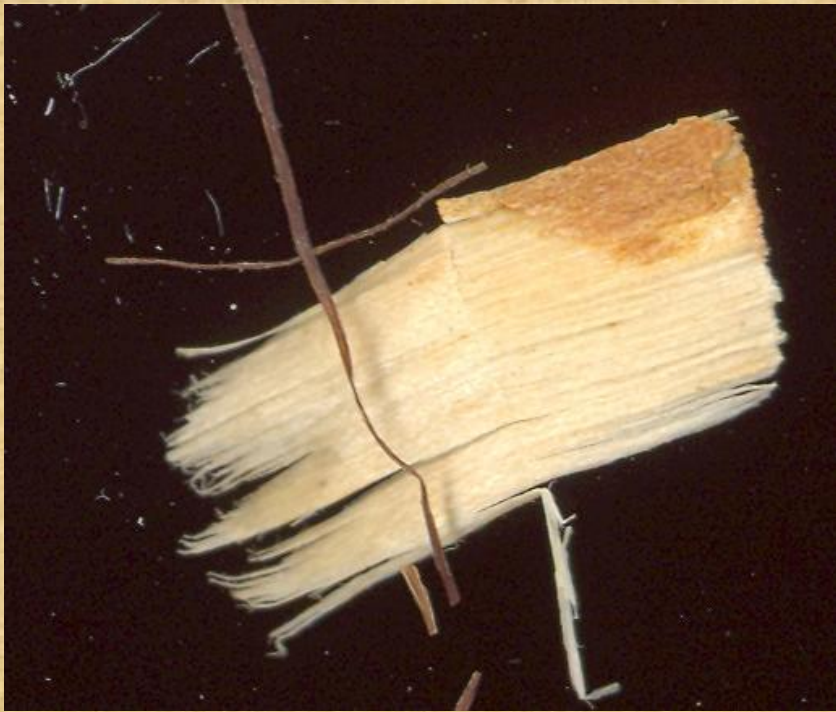
SOLUTION

VUE GENERALE



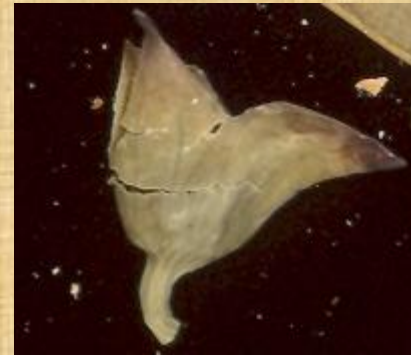
SOLUTION

VUE GENERALE



SOLUTION

VUE GENERALE



SOLUTION

VUE GENERALE

SOLUTION tisane n°6

- Buchu
- Bruyère cendrée
- Maïs
- Frêne
- Bouleau (écorce)
- Genêt à balai

Tisane n°7

6 plantes





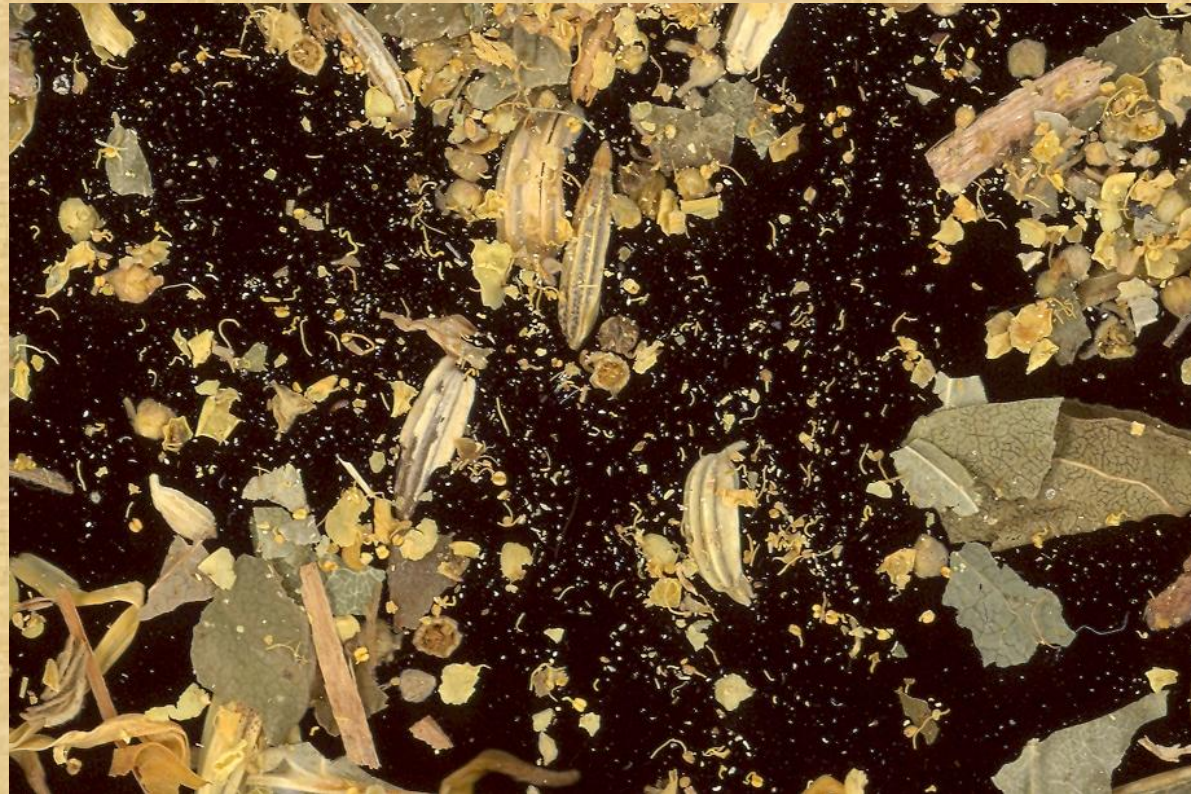
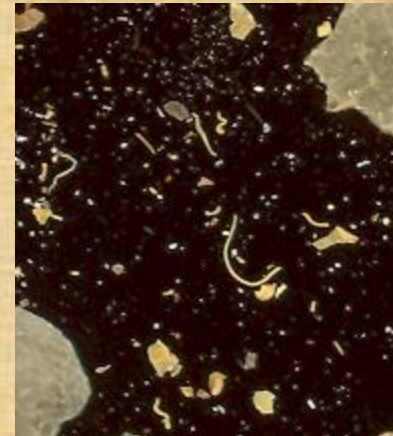
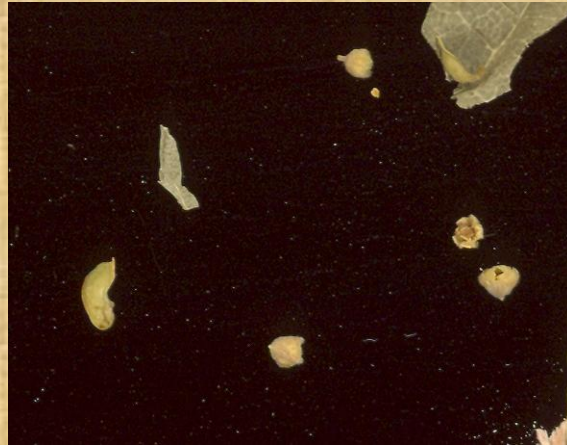
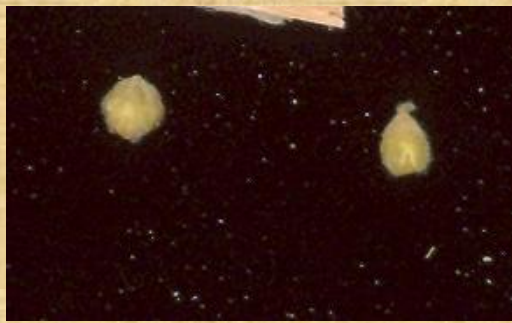
SOLUTION

VUE GENERALE



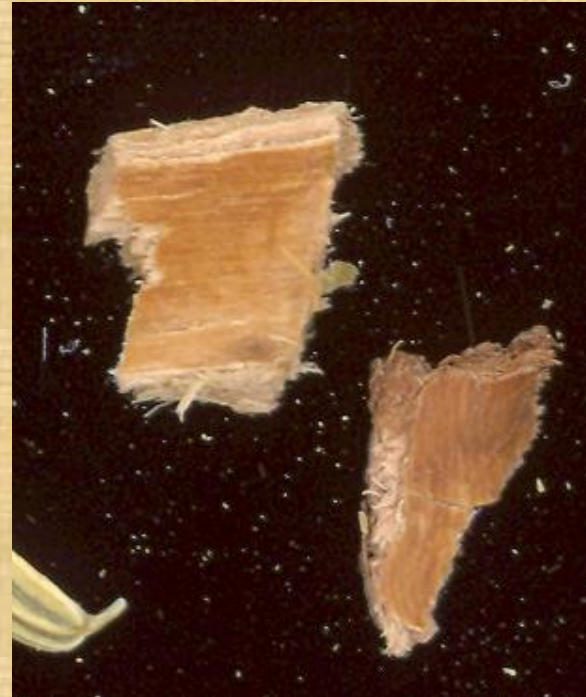
SOLUTION

VUE GENERALE



SOLUTION

VUE GENERALE



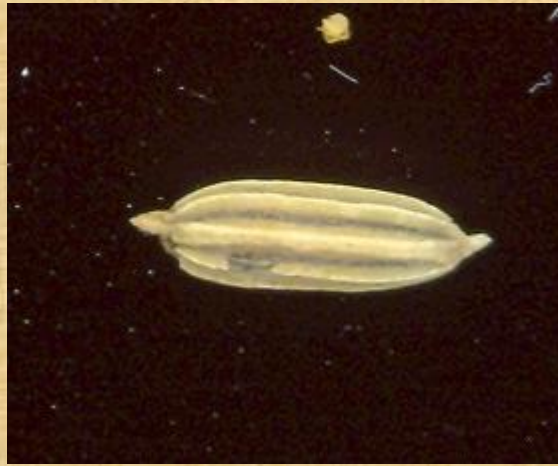
SOLUTION

VUE GENERALE



SOLUTION

VUE GENERALE



SOLUTION

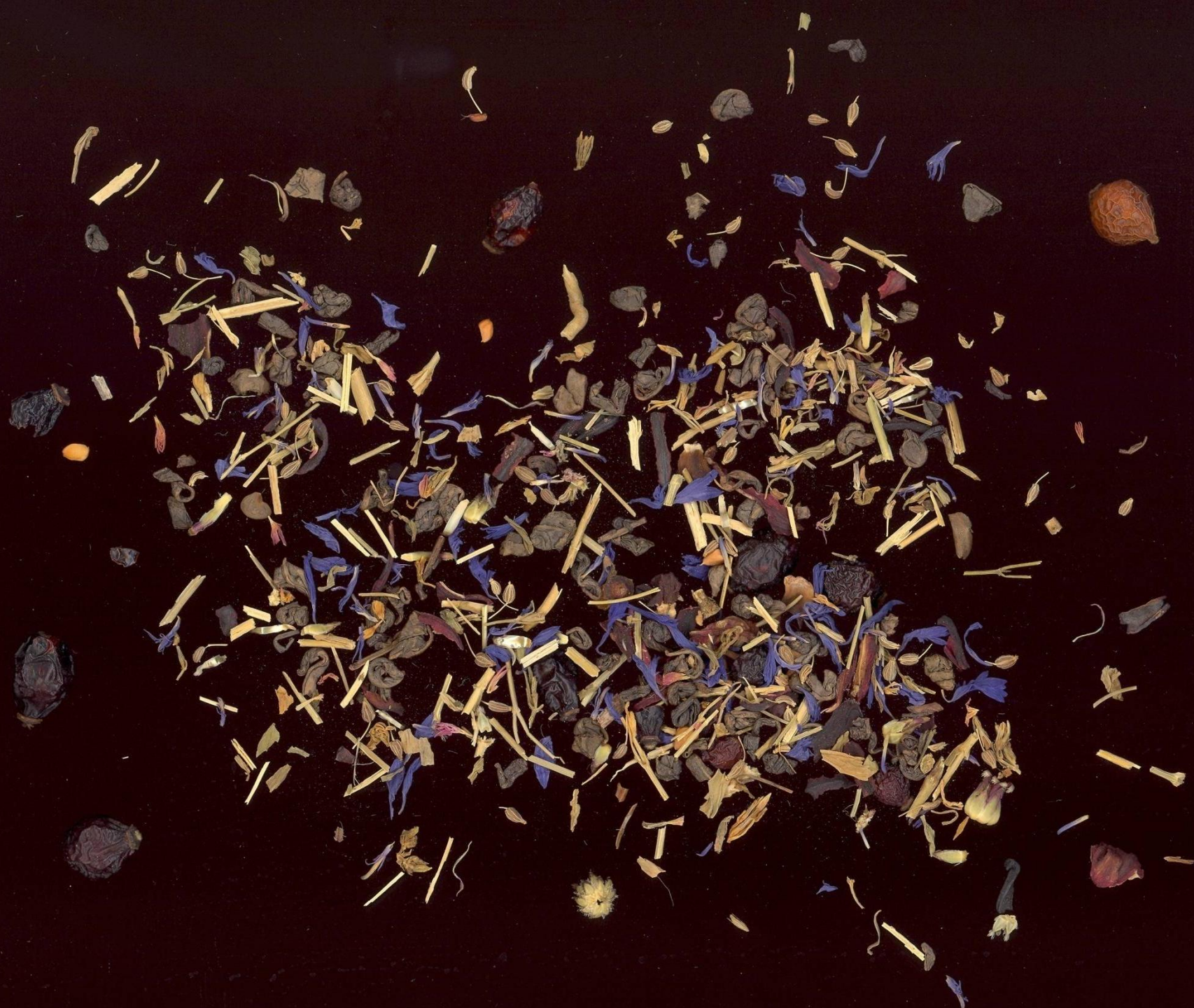
VUE GENERALE

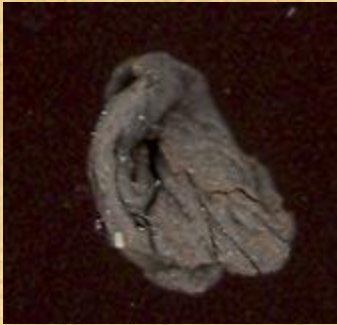
SOLUTION tisane n°7

- [Cassis](#)
- [Frêne](#)
- [Reine des prés](#)
- [Saule](#)
- [Souci](#)
- [Fenouil](#)

Tisane n°8

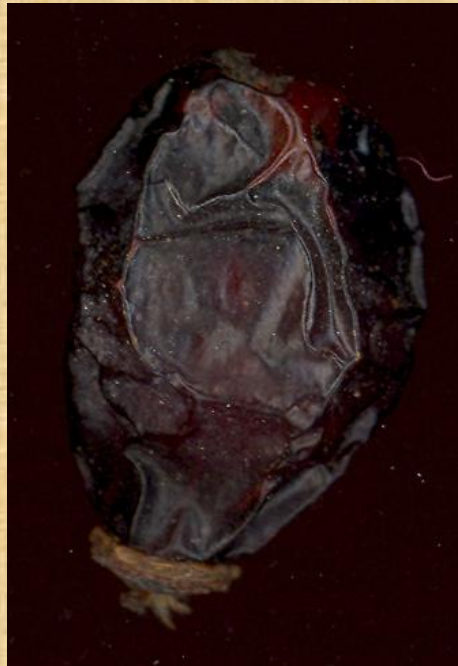
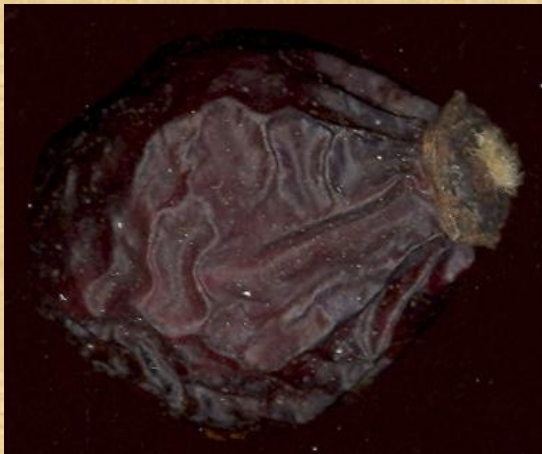
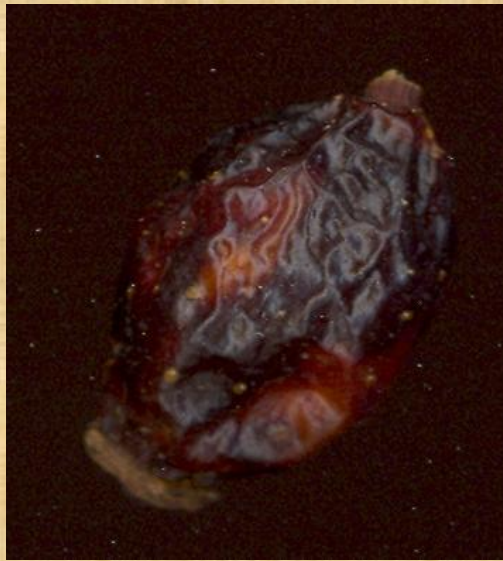
6 plantes





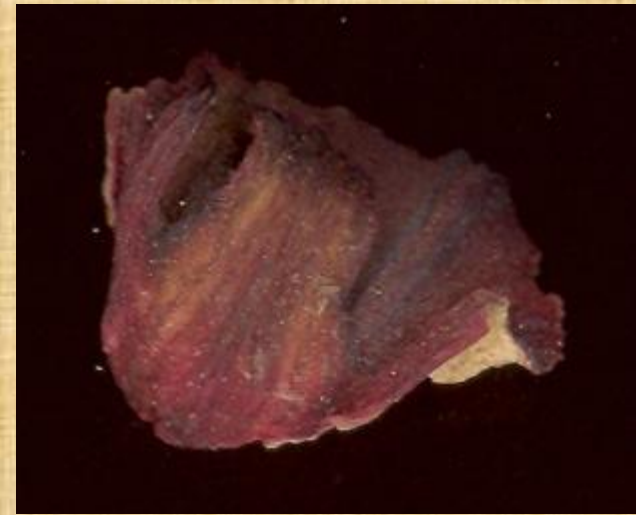
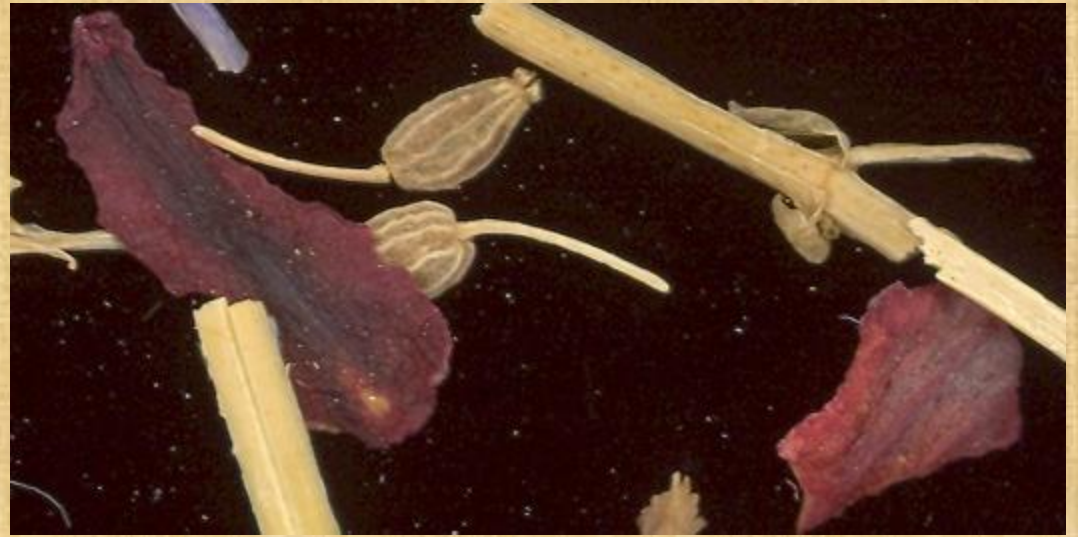
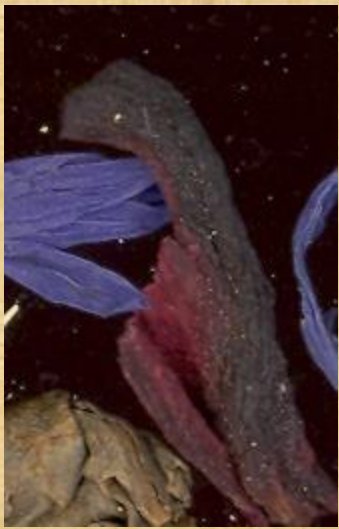
SOLUTION

VUE GENERALE



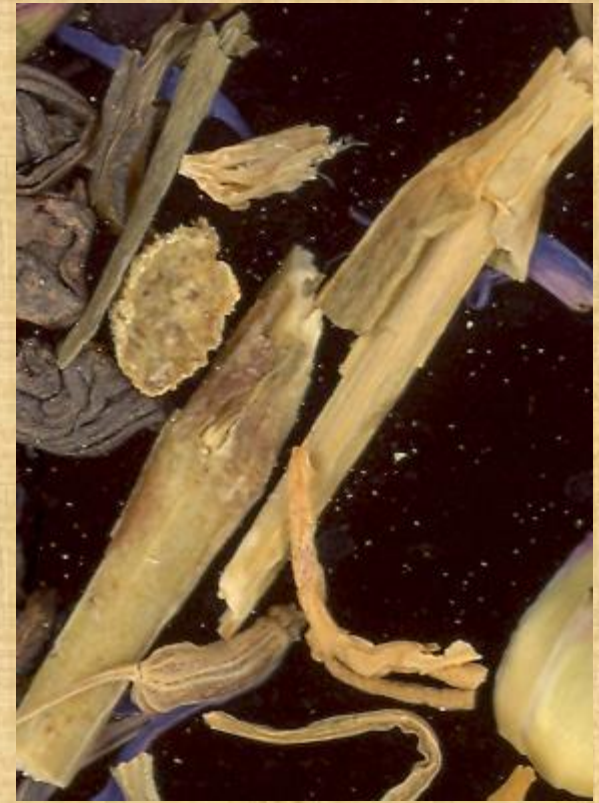
SOLUTION

VUE GENERALE



SOLUTION

VUE GENERALE



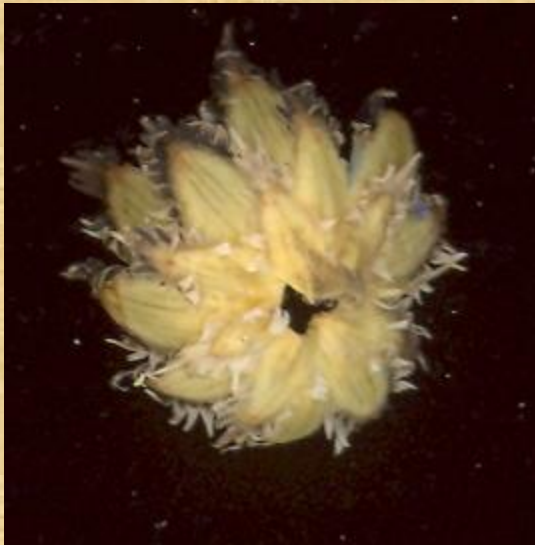
SOLUTION

VUE GENERALE



SOLUTION

VUE GENERALE



SOLUTION

VUE GENERALE

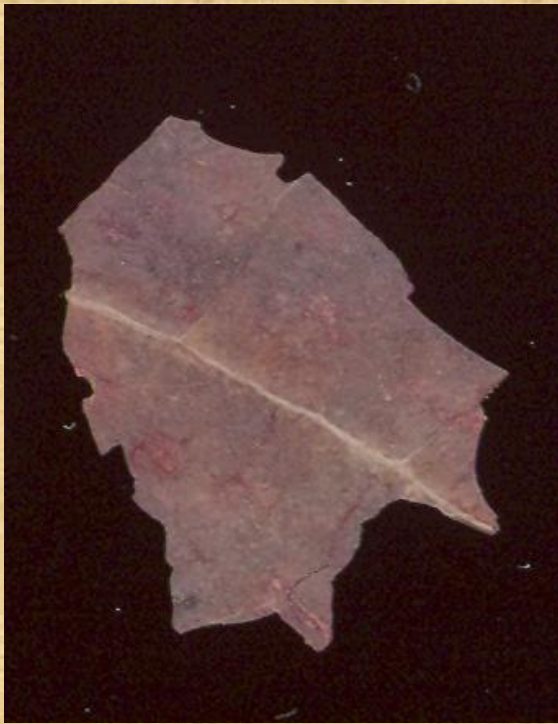
SOLUTION tisane n°8

- [Thé vert](#)
- [Cynorrhodon](#)
- [Hibiscus](#)
- [Petite centaurée](#)
- [Anis vert](#)
- [Bleuet](#)

Tisane n°9

6 plantes





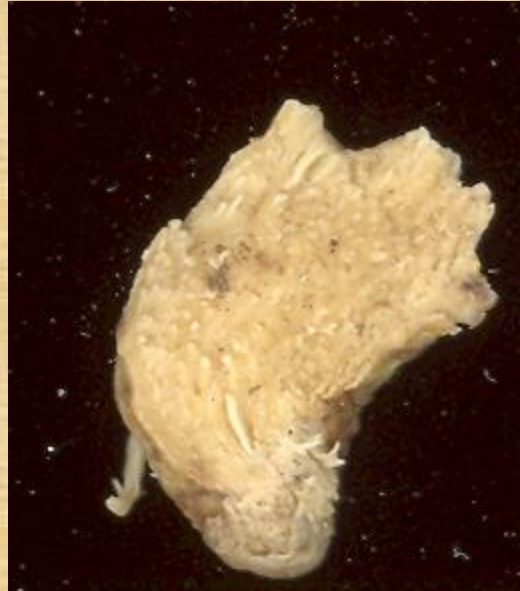
SOLUTION

VUE GENERALE



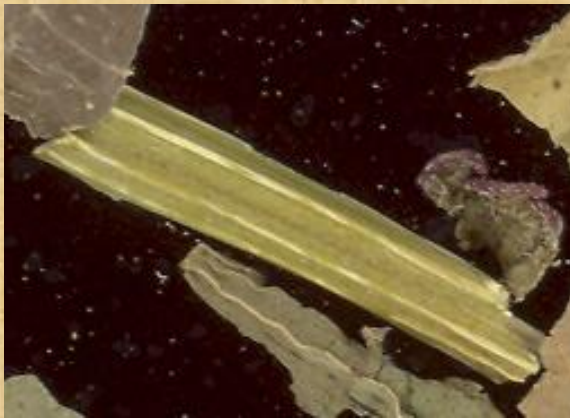
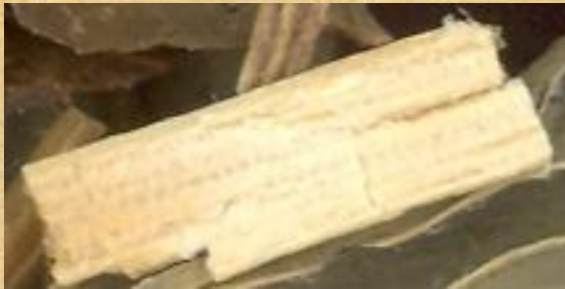
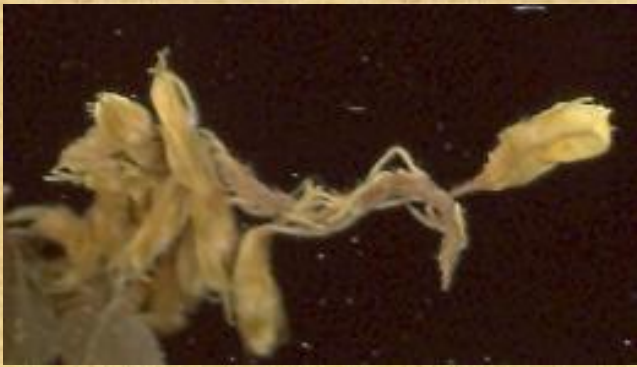
SOLUTION

VUE GENERALE



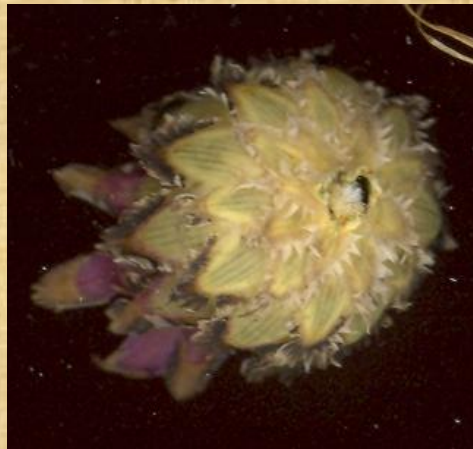
SOLUTION

VUE GENERALE



SOLUTION

VUE GENERALE



SOLUTION

VUE GENERALE



SOLUTION

VUE GENERALE

SOLUTION tisane n°9

- Vigne rouge
- Hamamélis
- Petit houx
- Mélilot
- Bleuet
- Menthe